

Appendix 1 – Food Safety Service Plan: Programmed (proactive) Activity

Proactive Tasks	Level of Activity		Progress
	Predicted activity 2017-18	Recorded activity 1 April 2017 – 31 December 2017	RAG Status
Programmed food hygiene inspections (risk group A-D, in addition to those below) see Figure 1 below.	444	231	R
Alternative Enforcement Strategy (AES) (e.g. cake makers and childminders)	229	81 Sent 33 Assessed	A
Revisits	100	22	G
Inspections of or visits to new food businesses ¹	130	64	A
Visits to Approved Establishments	8	4	A
Primary Authority Partnership Activity – includes requests for advice, attendance at meetings and provision of training ²	10	4	G
Other proactive visits (food, water and environmental samples/advisory)	220	142	G
Prosecutions and cautions	2	1 pending	G
Formal action (service of notices, closures)	20	1	G
Food safety and public health promotion	<ul style="list-style-type: none"> • The new food hygiene training programme has been delivered and well received • Newsletter has been published • Primary authority meetings continue. • Good progress has been made on the implementation of the Healthier Options Project • An introductory workshop to BBfA was held in December • Further engagement with the Food Standards Agency on Regulating our Future. 		

Notes

1. *New businesses continue to be unpredictable – the definition includes both brand new start-up businesses as well as those that are changes of ownership or food business operator within an existing business. All have to be added to the premises database and visited as soon as possible. New businesses are triaged to ensure that the brand new higher risk start-ups receive support and visits to clarify any queries they have around the requirements for compliance.*
2. *Officer time spent on Primary Authority Agreements such as that with Cambridgeshire Catering and Cleaning Services (CCS) are recharged to the business in line with the agreed cost recovery arrangements.*

Figure 1 – Number of premises requiring an intervention in 2017/18; situation at 31 December 2017 (see p4.3)

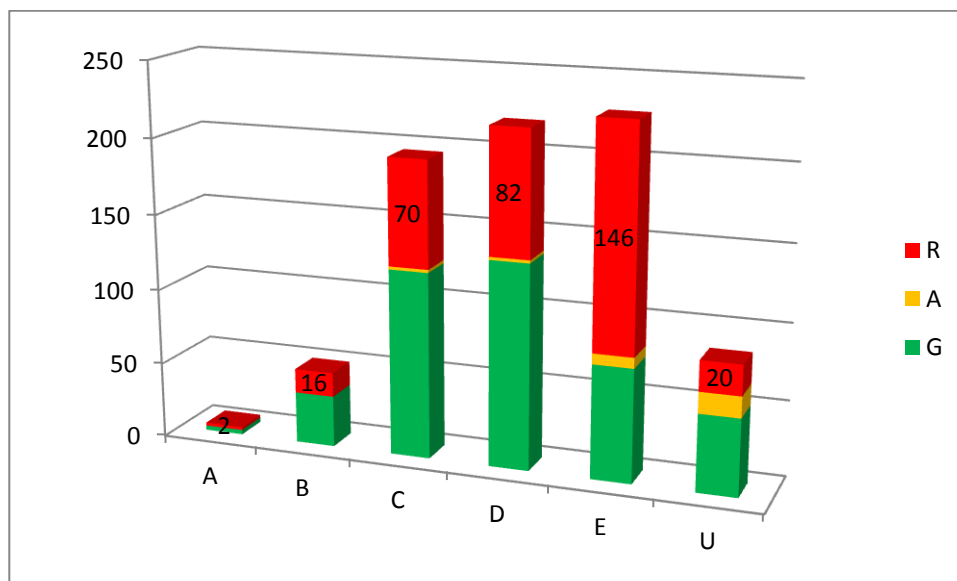


Figure 2 – Comparison of FHRs Scores across the Region (see p4.3)

